



KF 10 in Early Sweet table grapes: 2012 field trial

The results of field trial with table grapes from Early Sweet variety, treated with KF 10 shown below. The trial was performed in commercial vineyard in the Israeli Jordan valley:

1. Trial plot of 0.5 Ha, received 4 treatments of 10 L/ha during crop season: at bud break, early flowering, fruit set, early veraison.
2. Control plot: 0.5 Ha plot from same planting year, received regular treatment with no KF.

At harvest, 5 random samples of bunches, 2 KG each were taken from each plot. Sampling and testing was performed by the Department of Storage from Volcani Institute of the Israeli Ministry of Agriculture. Results are specified in the charts below. The results show significant increase in fruit sugar level at harvest. Even more significant was the contribution of the treatment to the quality of the product after 21 days of storage.

Chart no. 1- Sugar accumulation in fruit as TSS value:

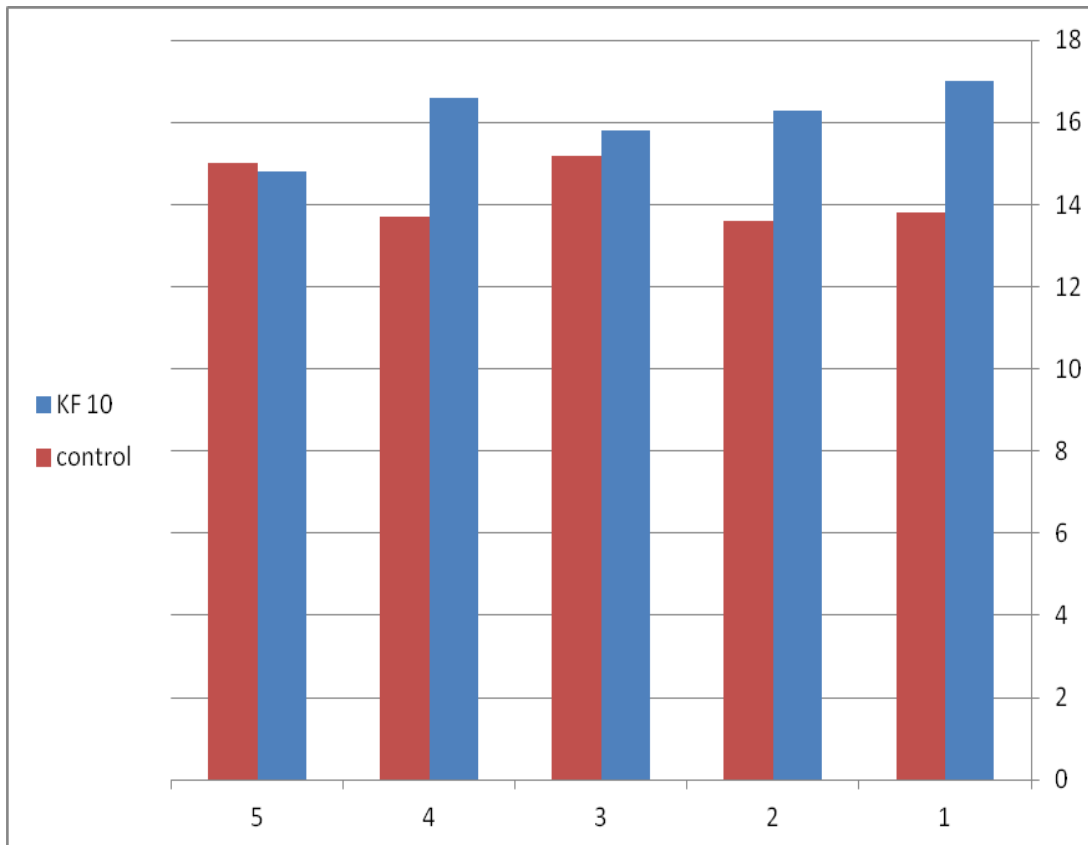




Chart no 2 - % of rot in samples after 21 days of storage:

